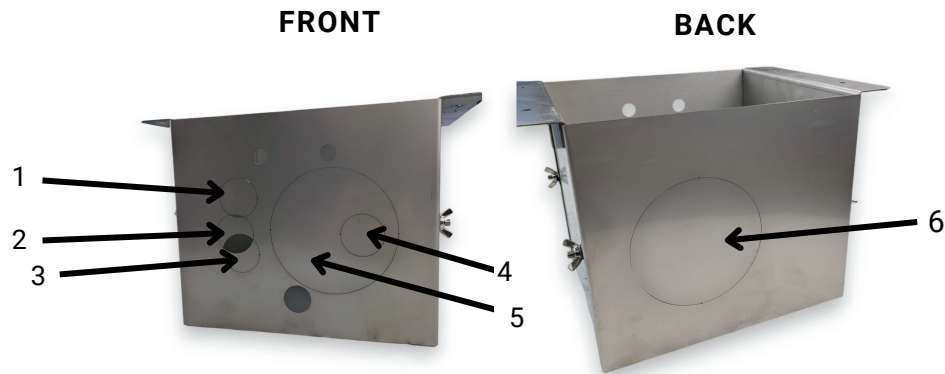


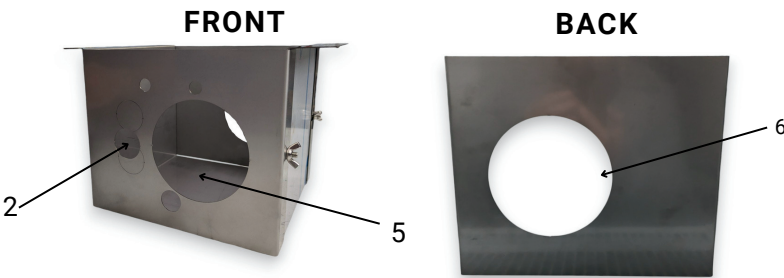
THIS MANUAL CONTAINS INSTRUCTIONS FOR ASSEMBLING AND INSTALLING THE HOUSING FOR VARIOUS MODELS OF PUNDMANN BOILERS. IT INCLUDES THE STEPS FOR PUNCHING THE NECESSARY OPENINGS.

## STARTING POINT



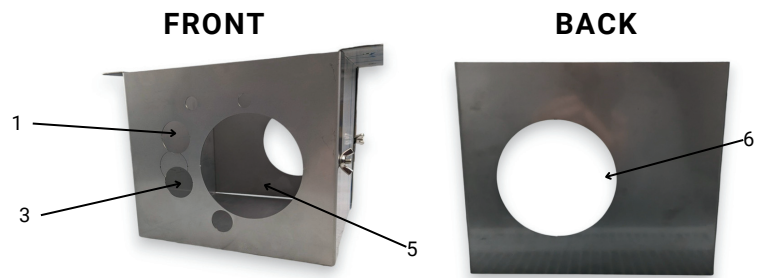
### BOILER AIR WITH ONE HEATING ELEMENT

PUNCH OUT 2, 5, 6



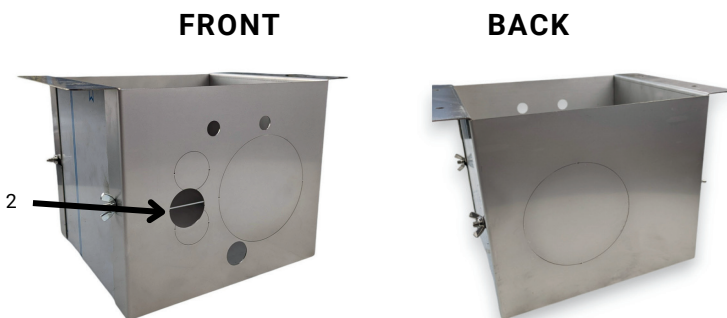
### BOILER AIR WITH TWO HEATING ELEMENTS

PUNCH OUT 1, 3, 5, 6



### BOILER WITH ONE HEATING ELEMENT

PUNCH OUT 2



### BOILER WITH TWO HEATING ELEMENTS

PUNCH OUT 2, 4

